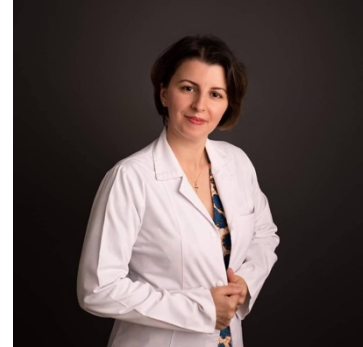


Cristina Toader

Educație:

- 2002 - 2008- Universitatea de Medicină și Farmacie “Carol Davila”, Facultatea de Medicină, București
- 2012-2015 - Pregătire în Rezidențiat, specialitatea Diabet, Nutriție și Boli Metabolice, Spitalul Universitar de Urgenta Elias, București



Experiență:

Iunie 2022 – prezent	Medic Primar diabet zaharat, boli de nutritie si boli metabolice – Spital Municipal Campina
8 luni	Ploiesti Medicina umana Medicina / Sanatate
Aug 2021 – mai 2022	Medic Primar diabet zaharat, boli de nutritie si boli metabolice – Clinica Hiperdia Affideea Ploiest
10 luni	Ploiesti Medicina umana Medicina / Sanatate
Iun 2015 – Iul 2021	Medic Primar diabet zaharat, boli de nutritie si boli metabolice - Spital Orasenesc Sinaia
6 ani si 1 luna	Sinaia Medicina umana Medicina / Sanatate
Oct 2014 - prezent	Medic Specialist specialitatea Medicina de Familie octombrie 2014 - Bucuresti
6 ani si 1 luna	Bucuresti Medicina umana Medicina / Sanatate
Apr 2015 - Iun 2020	Medic specialist diabet zaharat, boli de nutritie si boli metabolice- aprilie 2015 - Spital Orasenesc Sinaia
5 ani si 3 luni	Sinaia Medicina umana Medicina / Sanatate

Ian 2012 - Apr 2015 **Medic rezident diabet zaharat, boli nutritie si boli metabolice -
Spitalul Universitar de Urgenta Elias**
3 ani si 4 luni Bucuresti | Medicina umana | Medicina / Sanatate

Ian 2009 - Ian 2012 **Medic rezident medicina de familie - Spitalul Clinic de Urgenta Sf.
Pantelimon**
3 ani si 1 luna Bucuresti | Medicina umana | Medicina / Sanatate

Traininguri

Inspiring Program for Doctor's Development " IPoDD", February- November 2015 , Sinaia, dobandit in Feb 2015

Salzburg Columbia University Seminar Internal Medicine, Course Director: Joseph Tenenbaum, Columbia University / New York Presbyterian Hospital, USA, 31 August - 6 September 2014, dobandit in Aug 2014

Lucrari publicate

"Arterial stiffness and chronic kidney disease in middle-aged patients with type 2 diabetes mellitus", 82th European Atherosclerosis Congress, 1. O. Georgescu, S. Craciun, C. Nica, L. Banu, C Ion Toader, S Fica, ", 82th European Atherosclerosis Congress, Madrid, Spain 31 May-3 June 2014, abstract published in Atherosclerosis, Volume 235, Issue 2 e192-e301, August 2014.

dobandit in Aug 2014

“Diabetes mellitus and myocardial infarction in hospitalized patients”, 2. Toader C.1, Cretu V, Ioacara S, Dardari M., Iancu L, Epure M, Oprea A, Georgescu O, Popescu, Fica S., The 40th National Congress of the Romanian Society of Diabetes, Nutrition and Metabolic Disease, 21st-24st May 2014, Sibiu Romania.

dobandit in Mai 2014

“Diabetes mellitus and stroke in hospitalised patients”, The 40th National Congress of the Romanian Society of Diabetes, Nutrition and Metabolic Disease, Epure M, Dardari M, Ioacara S, Cretu V, Iancu L, Oprea A, Toader C, Reghina A, Panea C, Fica S, 21st-24st May 2014, Sibiu Romania.

“Red cell distribution width impact on prevalence of macrovascular complications, in hospitalized patients with diabetes”, The 40th National Congress of the Romanian Society of Diabetes, Nutrition and Metabolic Disease, Oprea A, Iancu L, Ioacara S, Cretu V, Dardari M, Toader C, Epure M, Rotaru R, Martin S, Fica S, 21st-24st May 2014, Sibiu Romania.

“Chronic Kidney disease and vascular stiffness in a group of middle-aged patients with type 2 diabetes mellitus”, The 39th Congress of the Romanian Society of Diabetes, Nutrition and Metabolic Disease, Georgescu O, Ion C, Nica C, Banu L, Ghimpu I, Pavel C, Fica S, 22-25 May 2013.